

ENGLISH



WELCOME TO THE WORLD OF

# ROSS

## Rapid Ozone Sleeve Sterilizer



Thank you for purchasing **ROSS** and welcome to the new standard in cleaning and sterilizing your sleeve. We have worked tirelessly with the sole aim of making your life easier, less laborious and healthier. We sincerely hope that your **ROSS** will add value to your life and put a smile on your face as much as we have enjoyed designing it and bringing it to you.

Regards

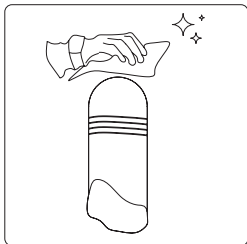
The **ROSS** Team

A FRESH START.  
EVERYDAY.

PLEASE READ THE **USAGE** AND **SAFETY INSTRUCTIONS** ON REVERSE.

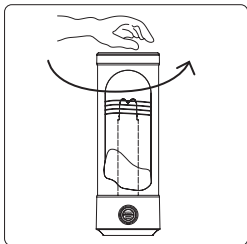
## USAGE INSTRUCTIONS:

Included in your purchase with **ROSS** is a lint-free Chamois cloth. For optimal results please wipe down the inside of your liner, making sure the cloth is only slightly damp. This is to remove any physical build up that may be present. **ROSS** is designed to sterilize all types of prosthetic liners. Pin liners, with pins attached, can be placed in **ROSS**.



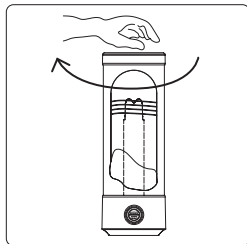
### STEP 1

Wipe down inside of liner to remove debris.



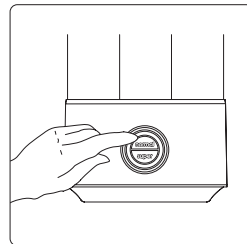
### STEP 2

To open lid twist anti-clockwise.  
Put liner into **ROSS**.



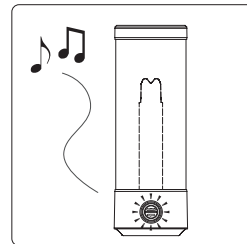
### STEP 3

To close lid twist clockwise ensuring it is locked and sealed.



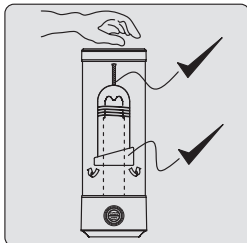
### STEP 4

Select cleaning cycle:  
NORMAL is 10 minutes  
SUPER is 20 minutes.

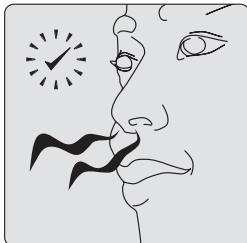


### STEP 5

Wait until **ROSS** indicates end of cleaning cycle with GREEN lights and end tone. Remove and enjoy your clean liner!  
2 minutes after the cycle has ended all lights will turn off.



If your liner is too long, you can fold the bottom up as indicated.



When you take your liner out of **ROSS**, it will have a sterile fresh fragrance.

## SETTINGS:

**ROSS** has 2 settings:

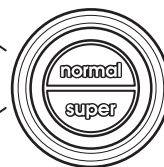
**NORMAL:** 10 minute cycle for everyday use

**SUPER:** 20 minute cycle for deep clean

If need be, feel free to use as many cleaning cycles in a row, until you are satisfied with the result.

10 mins  
for everyday use

20 mins  
for deep clean



To stop or reset mid cycle, press both buttons together, alternatively power off & power on at the switch on the back of the unit.

## SAFETY:

**Do not operate without a liner.**

**Do not place anything else besides prosthetic liners and prosthetic liner pins inside ROSS.**

For optimal use, make sure your liner is dry before placing it in **ROSS**.

For emergency stop, unplug **ROSS** from electrical supply.

### PLEASE NOTE:

Some liners may slightly dis-color on the inside.



### WARNING

**This product produces Ozone.  
Please ensure lid is sealed while in operation.**

Tested and meets the guideline requirements of 29 CFR 1910.1000 Table Z-1 (US) and Health Canada: Residential Indoor Air Quality Guideline: Ozone.



Independent laboratory tested.  
Scan to view laboratory report.

**TRIOX**  
innovations

TriOx Innovations LLC. 5140 Moundview Dr, Red Wing, MN 55066, United States.

[www.cleanwithross.com](http://www.cleanwithross.com)